

**ALL PURPOSE/PLASTER WORK SINK**

- Vitreous china
- High splash-back
- Wall hanger
  - Shown with 7295.152 Amarilis/Heritage faucet with soap dish and lever handles (not included)

**Plain back (less faucet holes):**

- ❑ **9061.292** for wall hanger (included) or for exposed bracket support [381mm (15") painted brackets available].

**Single center faucet hole:**

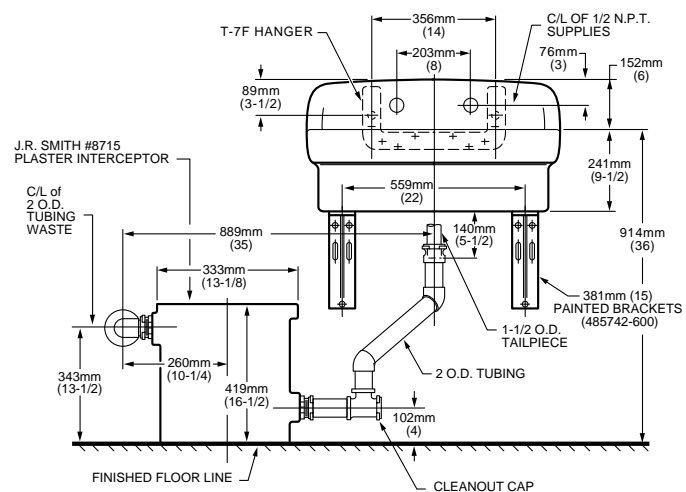
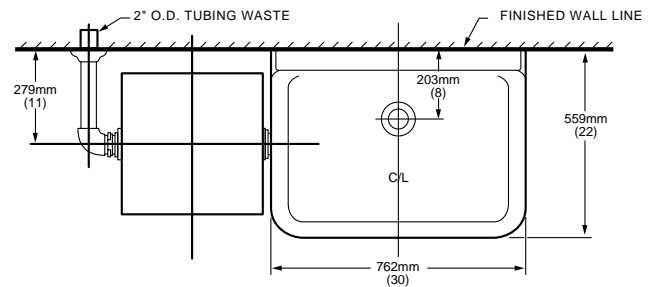
- ❑ **9061.250** for wall hanger (included) or for exposed bracket support [381mm (15") painted brackets available].

**Faucet holes on 203mm (8") centers (Illus.):**

- ❑ **9061.193** for wall hanger (included) or for exposed bracket support [381mm (15") painted brackets available].

Nominal Dimensions:  
762 x 559mm (30" x 22")

Fixture Dimensions conform to ANSI Standard A112.19.2



**NOTES:**  
 SHOWN WITH J.R. SMITH NO. 8715 PLASTER INTERCEPTOR.  
 FITTINGS NOT INCLUDED AND MUST BE ORDERED SEPARATELY.  
 15" PAINTED SUPPORT BRACKETS 485742-600 AVAILABLE AND MUST BE ORDERED SEPARATELY.  
 PROVIDE SUITABLE REINFORCEMENT FOR ALL WALL SUPPORTS.  
 IMPORTANT: Dimensions of fixtures are nominal and may vary within the range of tolerances established by ANSI Standard A112.19.2.  
 These measurements are subject to change or cancellation. No responsibility is assumed for use of superseded or voided pages.

**To Be Specified**

- ❑ Faucet: 7295.152 with swing spout, aerator, soap dish and lever handles
- ❑ Alternative Faucet:
- ❑ Bracket Support: 485742-600 (2 required)
- ❑ Grid Drain: 7716.020 (1-1/2" tailpiece)
- ❑ Drain: 7735.038 2" O.D. drain connection to trap and wall
- ❑ Trap: Plaster-Interceptor trap by others (space must be left for removal of screens)
- ❑ P-trap:
- ❑ Nipple:

Available in White only