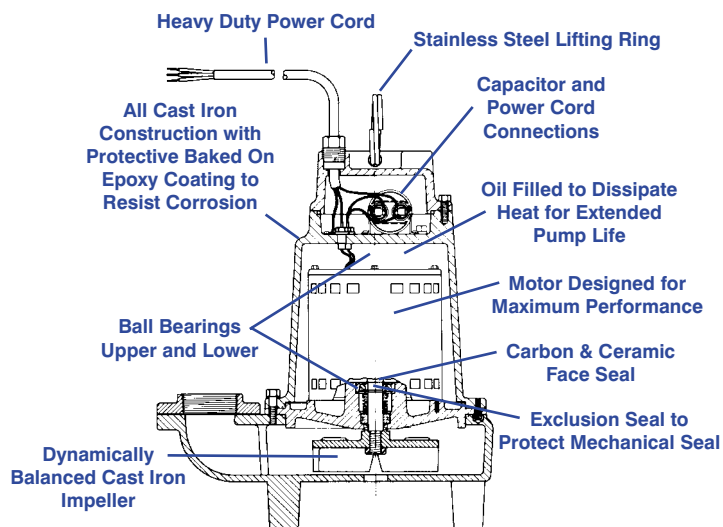


16EH SERIES



Features

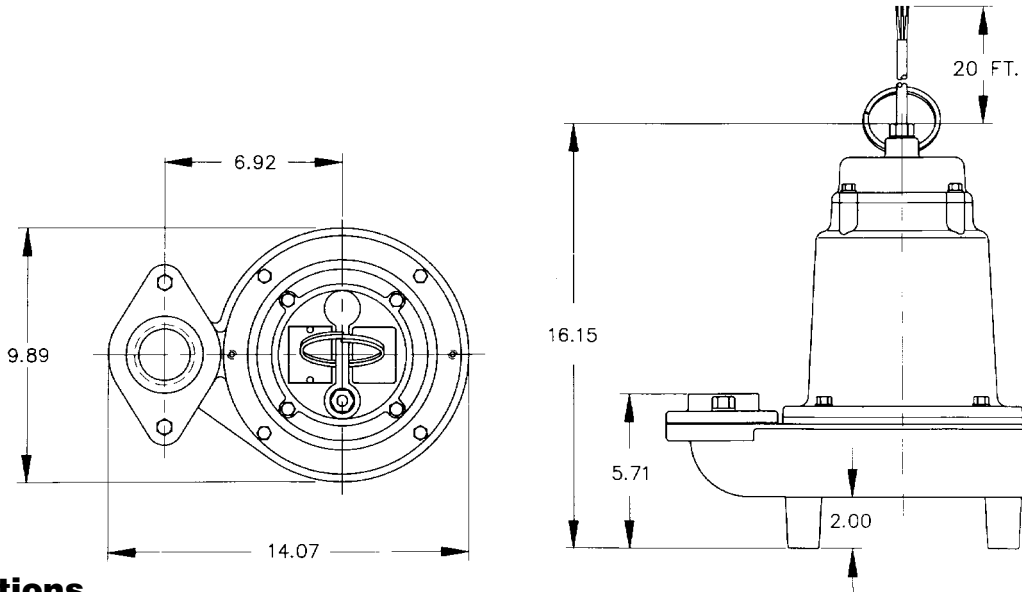
- Handles liquids and solid waste materials up to 3/4" diameter
- Cast iron pump housings with protective epoxy coating for corrosion and rust resistance
- Oil-filled motor housings for lifetime lubrication and rapid heat dissipation
- Stainless steel screws, bolts and lifting ring
- Mechanical seal (stainless steel spring, nitrite parts, carbon and ceramic faces) for long life and reliability
- Secondary exclusion seal to help protect mechanical seal
- Highspeed, 3450 RPM, 1 HP, ball bearing motor and thermal overload protection
- Permanent split capacitor design
- Capacitor and power cord connections isolated from oil filled housing for ease of oil field maintenance
- Dynamically balanced two vane non-clogging impeller with pump-out vanes extend life of pump



For Residential, Commercial, Industrial, and Agricultural use. Pumps feature 2" FNPT discharge with a lift of 81'. Heavy duty cast iron construction and stainless steel hardware.

Little Giant Pump Co.

16EH SERIES SUMP/EFFLUENT PUMP

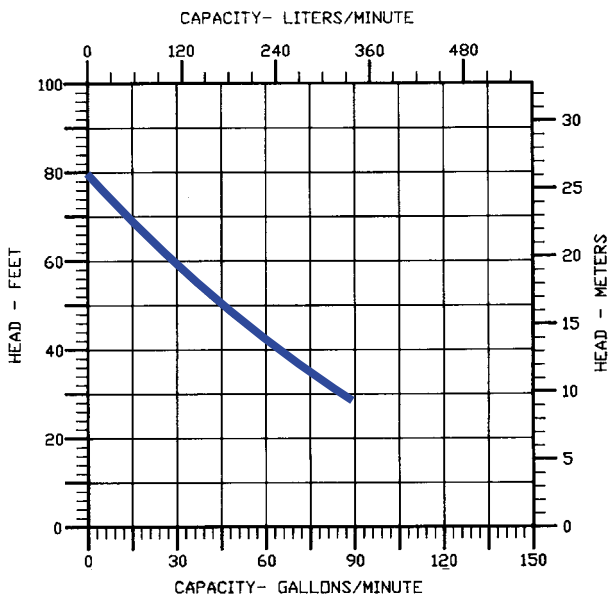


Specifications

MODEL NO.	ITEM NO.	DISCHARGE	SOLIDS SIZE (Dia. In)	LISTING	HP	VOLTS	PHASE	HZ	SPEED	AMPS/WATTS	SHUT OFF	PSI	PWR. CORD	WEIGHT
16EH-CIM	514520	2" FNPT	3/4"	UL/CSA	1	230	1	60	3450	9.0/2200	81'	35.1	20'*	82 LBS.
16EH-CIM	514530	2" FNPT	3/4"	UL/CSA	1	208-240	3*	60	3450	6.6/1350	81'	35.1	20'*	82 LBS.
16EH-CIM	514540	2" FNPT	3/4"	UL/CSA	1	460	3*	60	3450	3.2/1350	81'	35.1	20'*	82 LBS.

* 3 phase pumps require a control panel to operate

* w/out plug



Construction

Motor Housing	Epoxy Coated Cast Iron
Impeller Material	Epoxy Coated Cast Iron
Impeller Type	Non-clog
Volute	Epoxy Coated Cast Iron
Power Cord	16/3, STW
Mechanical Shaft Seal	Carbon/Ceramic
Fasteners	Stainless Steel
Shaft	Stainless Steel
Bearings	Upper and lower ball bearings



ISO 9001 CERTIFIED

Little Giant Pump Co.

PO Box 12010
Okla. City, OK 73157

Phone: 405.947.2511
Fax: 405.228.1550

www.LittleGiantPump.com

Form No. 994352 - 11/99